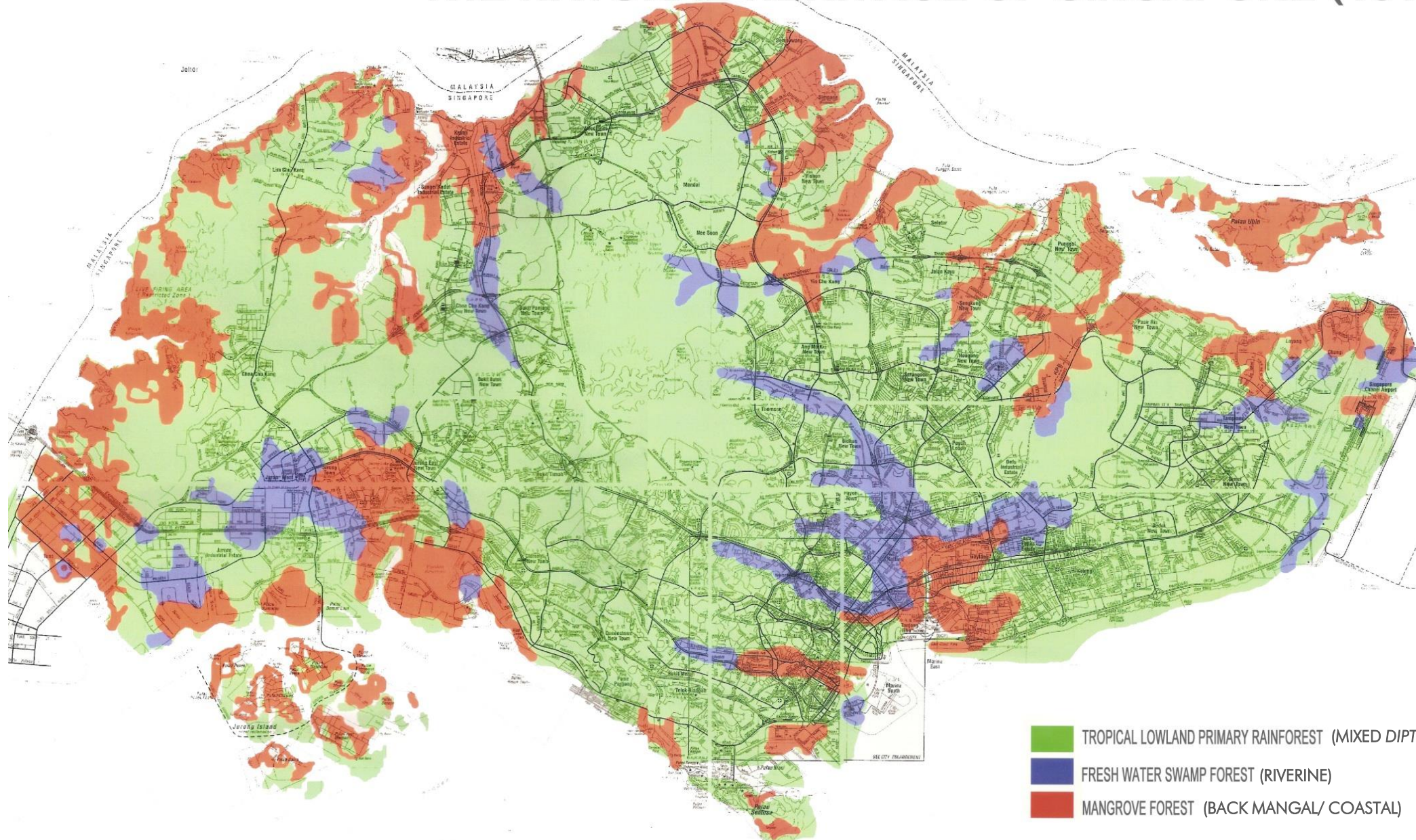

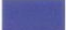



STREETSCAPE & NATURE WAY PLANTING

BASED ON THE HISTORICAL VEGETATION OF SINGAPORE, CORLETT RT 1991.

THE NATURAL HERITAGE OF SINGAPORE (1819)



-  TROPICAL LOWLAND PRIMARY RAINFOREST (MIXED DIPTEROCARPUS FOREST)
-  FRESH WATER SWAMP FOREST (RIVERINE)
-  MANGROVE FOREST (BACK MANGAL/ COASTAL)

STREETSCAPE & NATURE WAY PLANTING

BACK MANGAL

Emergent	Canopy	Understory	
<i>Dryobalanops aromatica</i>	<i>Buchanania arborescens</i>	<i>Ardisia elliptica</i>	<i>Neolitsia cassia</i>
<i>Intsia bijuga</i>	<i>Calophyllum inophyllum</i>	<i>Barringtonia</i>	<i>Pluchea indica</i>
<i>Intsia palembanica</i>	<i>Dialium indum</i>	<i>asiatica/racemosa</i>	<i>Premna serratifolia</i>
<i>Maranthes corymbosa</i>	<i>Erythroxylum cuneatum</i>	<i>Calophyllum soulattri</i>	<i>Syzygium leucoxyton</i>
<i>Palaquium obovatum</i>	<i>Garcinia celebica</i>	<i>Carallia brachiata</i>	<i>Syzygium zeylanicum</i>
<i>Shorea guiso</i>	<i>Garcinia parvifolia</i>	<i>Cerbera manghas</i>	
<i>Rubroshorea platycarpa</i>	<i>Heritiera littoralis</i>	<i>Cynometra ramiflora</i>	
<i>Sindora wallichii</i>	<i>Hopea sangal</i>	<i>Dendrolobium umbellatum</i>	
<i>Terminalia catappa</i>	<i>Horsfieldia irya</i>	<i>Guettarda speciosa</i>	
	<i>Ilex cymosa</i>	<i>Hibiscus tiliaceus</i> 'Tricolor'	
	<i>Knema corticosa</i>	<i>Memecylon</i> spp.	
	<i>Melaleuca cajuputi</i>		
	<i>Planchonella obovata</i>		
	<i>Syzygium glaucum</i>		
	<i>Syzygium syzygioides</i>		

*Not native.

*Plant list is an example only. It is non-exhaustive.

STREETSCAPE & NATURE WAY PLANTING

COASTAL

Emergent	Canopy	Understory	
<i>Intsia bijuga</i>	<i>Erythroxylum cuneatum</i>	<i>Aridisia elliptica</i>	<i>Guettarda speciosa</i>
<i>Intsia palembanica</i>	<i>Knema corticosa</i>	<i>Barringtonia asiatica</i>	<i>Hibiscus tiliaceus</i>
<i>Maranthes corymbosa</i>	<i>Ilex cymosa</i>	<i>Barringtonia racemosa</i>	<i>Memecylon</i> spp.
<i>Melaleuca cajuputi</i>	<i>Magnolia grandiflora</i>	<i>Carallia brachiata</i>	<i>Neolitsea cassia</i>
<i>Palaquium obovatum</i>	<i>Milletia pinnata</i>	<i>Cerbera manghas</i>	<i>Tristaniopsis obovata</i>
<i>Shorea gratissima</i>	<i>Planchonella obovata</i>	<i>Cerbera odollam</i>	<i>Tristaniopsis whiteana</i>
	<i>Syzygium myrtifolium</i>	<i>Coccoloba uvifera</i>	<i>Xanthostemon youngii</i>
	<i>Syzygium pycnanthum</i>	<i>Conocarpus erectus</i>	
	<i>Syzygium syzygioides</i>	<i>Cynometra iripa</i>	
		<i>Garcinia celebica</i>	

*Not native.

*Plant list is an example only. It is non-exhaustive.

STREETSCAPE & NATURE WAY PLANTING

RIVERINE/FRESHWATER SWAMP

Emergent	Canopy	Understory	
<i>Dillenia reticulata</i>	<i>Alstonia spatulata</i>	<i>Aidia densiflora</i>	<i>Ploiarium elegans</i>
<i>Dyera costulata</i>	<i>Anisoptera megistocarpa</i>	<i>Alsophila latebrosa</i>	<i>Saraca cauliflora</i>
<i>Palaquium obovatum</i>	<i>Camptosperma auriculatum</i>	<i>Baccaurea parviflora</i>	<i>Syzygium aqueum</i>
<i>Scapium affine</i>	<i>Hopea mengarawan</i>	<i>Cyrtostachys renda</i>	<i>Tristaniopsis</i> spp.
<i>Scaphium macropodum</i>	<i>Knema conferta</i>	<i>Dillenia excelsa</i>	
<i>Shorea sumatrana</i>	<i>Knema hookeriana</i>	<i>Diospyros lanceifolia</i>	
	<i>Pterospermum javanica</i>	<i>Elaeocarpus mastersii</i>	
	<i>Sterculia macrophylla</i>	<i>Gardenia tubifera</i>	
	<i>Syzygium papillosum</i>		

*Not native.

*Plant list is an example only. It is non-exhaustive.

STREETSCAPE & NATURE WAY PLANTING

MIXED LOWLAND DIPTEROCARP FOREST

Emergent	Canopy	Understory	
<i>Alstonia angustiloba</i>	<i>Agathis borneensis</i>	<i>Aglaia argentea</i>	<i>Litsea elliptica</i>
<i>Anisoptera megistocarpa</i>	<i>Archidendron jiringa</i>	<i>Baccaurea ramiflora</i>	<i>Memecylon caeruleum</i>
<i>Dipterocarpus costulatus</i>	<i>Garcinia atroviridis</i>	<i>Cleistanthus malaccensis</i>	<i>Memecylon ovatum</i>
<i>Dipterocarpus condorensis</i> subsp. <i>penangianus</i>	<i>Knema conferta</i>	<i>Clausena excavata</i>	<i>Rhodamnia cinerea</i>
<i>Dipterocarpus kunstleri</i>	<i>Knema hookeriana</i>	<i>Cratoxylum maingayi</i>	<i>Sandoricum koetjape</i>
<i>Koompassia malaccensis</i>	<i>Sloetia elongata</i>	<i>Cratoxylum cochinchinensis</i>	
<i>Parkia speciosa</i>	<i>Sterculia parviflora</i>	<i>Dillenia excelsa</i>	
<i>Shorea ovalis</i>	<i>Sterculia rubiginosa</i>	<i>Elaeocarpus mastersii</i>	
	<i>Syzygium polyanthum</i>	<i>Gnetum gnemon</i>	

*Not native.

*Plant list is an example only. It is non-exhaustive.

STREETSCAPE & NATURE WAY PLANTING

COLOURS OF NATURE (FOR MAJOR ROADS, EXPRESSWAYS & CITY CENTRAL)

Emergent	Canopy	Understory	
<i>Dyera costulata</i>	<i>Amherstia nobilis</i>	<i>Amesiodendron chinense</i>	<i>Hibiscus tiliaceus</i> 'Tricolor'
<i>Koompassia excelsa</i>	<i>Buchanania arborescens</i>	<i>Calliandra tergemina</i> var. <i>emarginata</i>	<i>Lagerstroemia floribunda</i>
<i>Palaquium gutta</i>	<i>Ceiba speciosa</i>	<i>Calophyllum soulattri</i>	<i>Lagerstroemia speciosa</i>
<i>Peltophorum pterocarpum</i>	<i>Cratoxylum cochinchinense</i>	<i>Cassia fistula</i> x <i>javanica</i>	<i>Pisonia grandis</i>
<i>Pentaspadon motleyi</i>	<i>Cynometra lenticellata</i>	<i>Chrysophyllum cainito</i>	<i>Plumeria rubra</i> cultivars
<i>Terminalia bentzoei</i>	<i>Diospyros tristis</i>	<i>Clusea rosea</i> 'Aurea-Marginata'	<i>Saraca cauliflora</i>
<i>Sindora wallachii</i>	<i>Garcinia nigrolineata</i>	<i>Dendrolobium umbellatum</i> 'Aurea'	<i>Tecoma stans</i>
<i>Rubroshorea macroptera</i>	<i>Hopea ferrea</i>	<i>Elaeocarpus mastersii</i>	<i>Xanthostemon youngii</i>
<i>Xanthostemon chrysanthus</i>	<i>Lepisanthes alata</i>	<i>Flacourtia inermis</i>	
	<i>Mesua ferrea</i>	<i>Gardenia tubifera</i>	
	<i>Pometia pinnata</i> f. <i>alnifolium</i>		
	<i>Pterospermum sumatranum</i>		

*Not native.

*Plant list is an example only. It is non-exhaustive.

